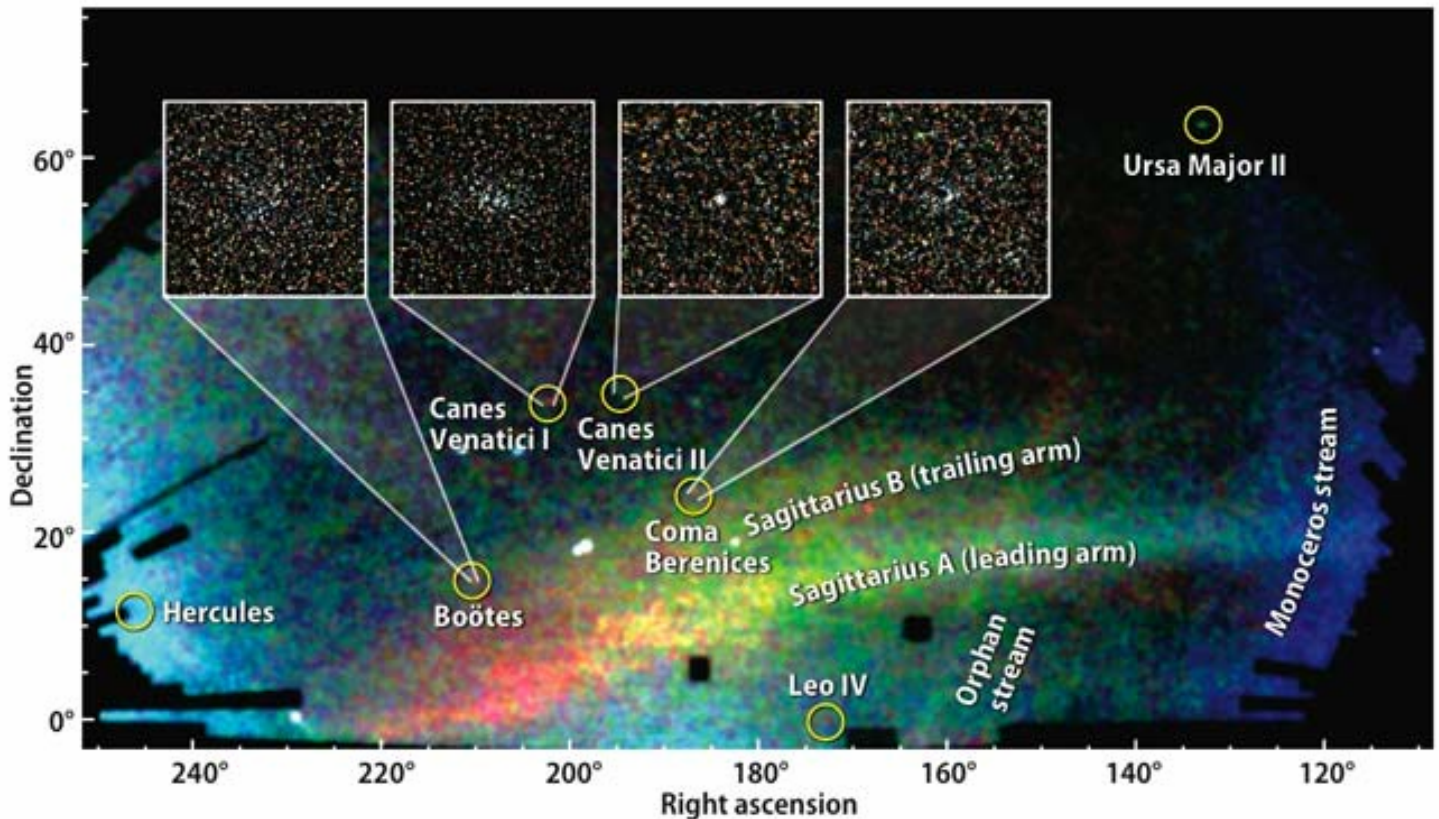


The Field of Streams and Discovery of New Dwarf Galaxies in the Milky Way from SDSS-II



Researchers from the Sloan Digital Sky Survey (SDSS-II), along with their JINA collaborators, recently announced the discovery of eight new dwarf galaxies, seven of them satellites orbiting the Milky Way. They resemble systems cannibalized by the Milky Way billions of years ago and help close the gap between the observed number of dwarf satellites and theoretical predictions. Also shown above are streams of debris that are likely to have been stripped from other dwarfs or globular clusters that have interacted with the Milky Way in the past few billion years. These discoveries have been described in a series of articles appearing in the *Astrophysical Journal Letters*.

Credit: Vasily Belokurov, SDSS-II, *Astronomy magazine*, Kalmbach Publishing Co.

Contact:

Timothy Beers (Michigan State University) 517-355-9200x2416 beers@pa.msu.edu